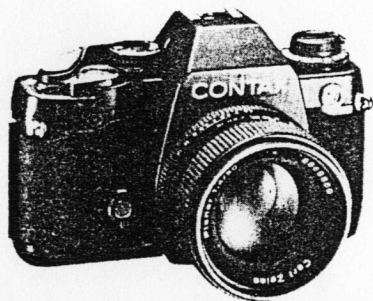



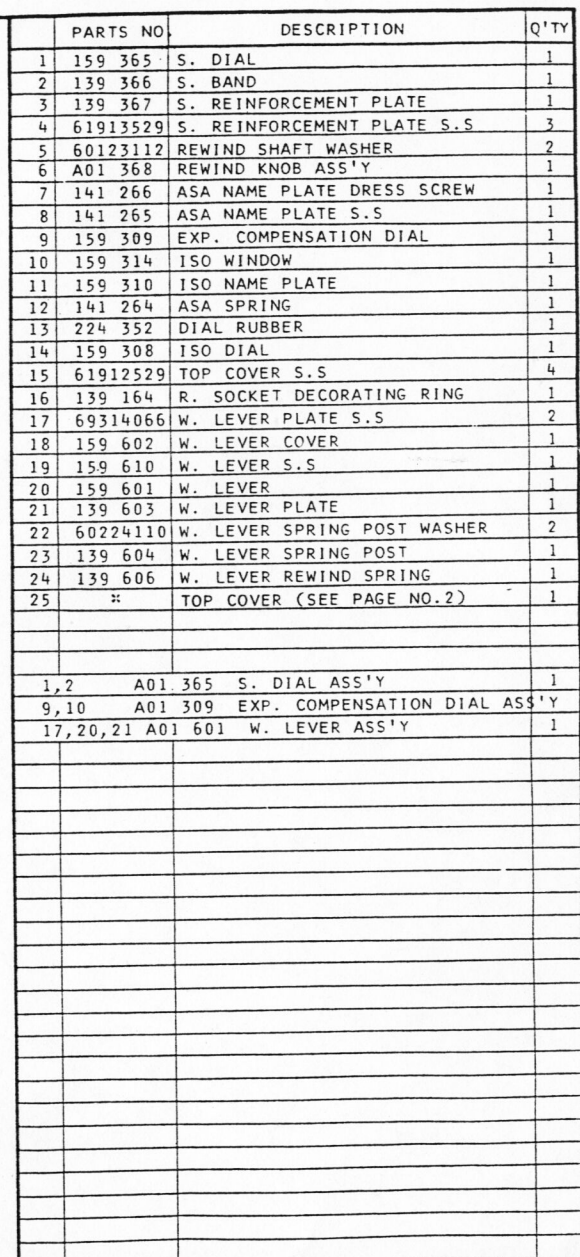
# CONTAX

# 159 MM

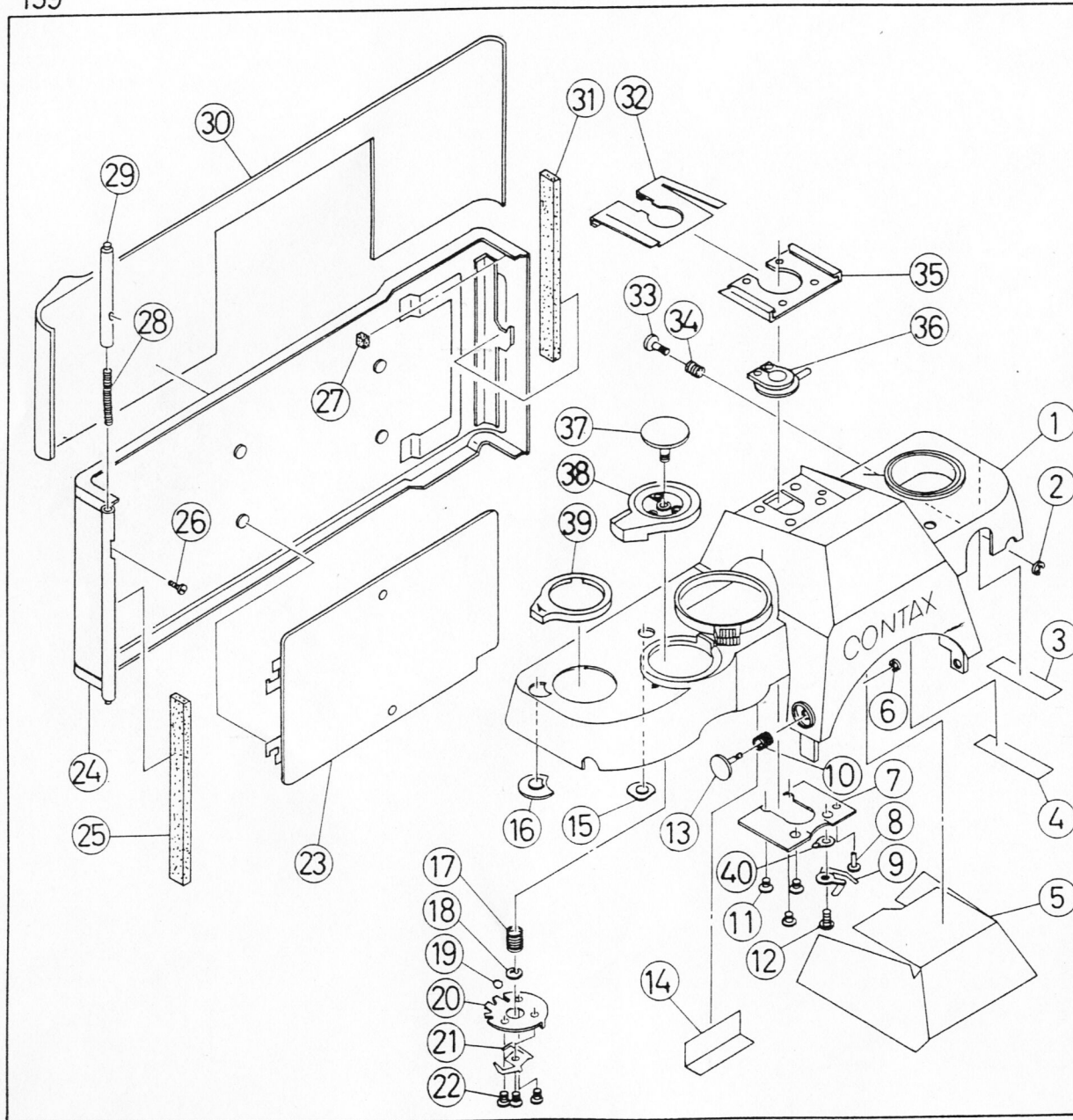
ASSEMBLING CHART



 KYOCERA CORPORATION  
YASHICA DIVISION JAPAN



NOTE: PARTS WITH MARKED \* ARE NOT AVAILABLE

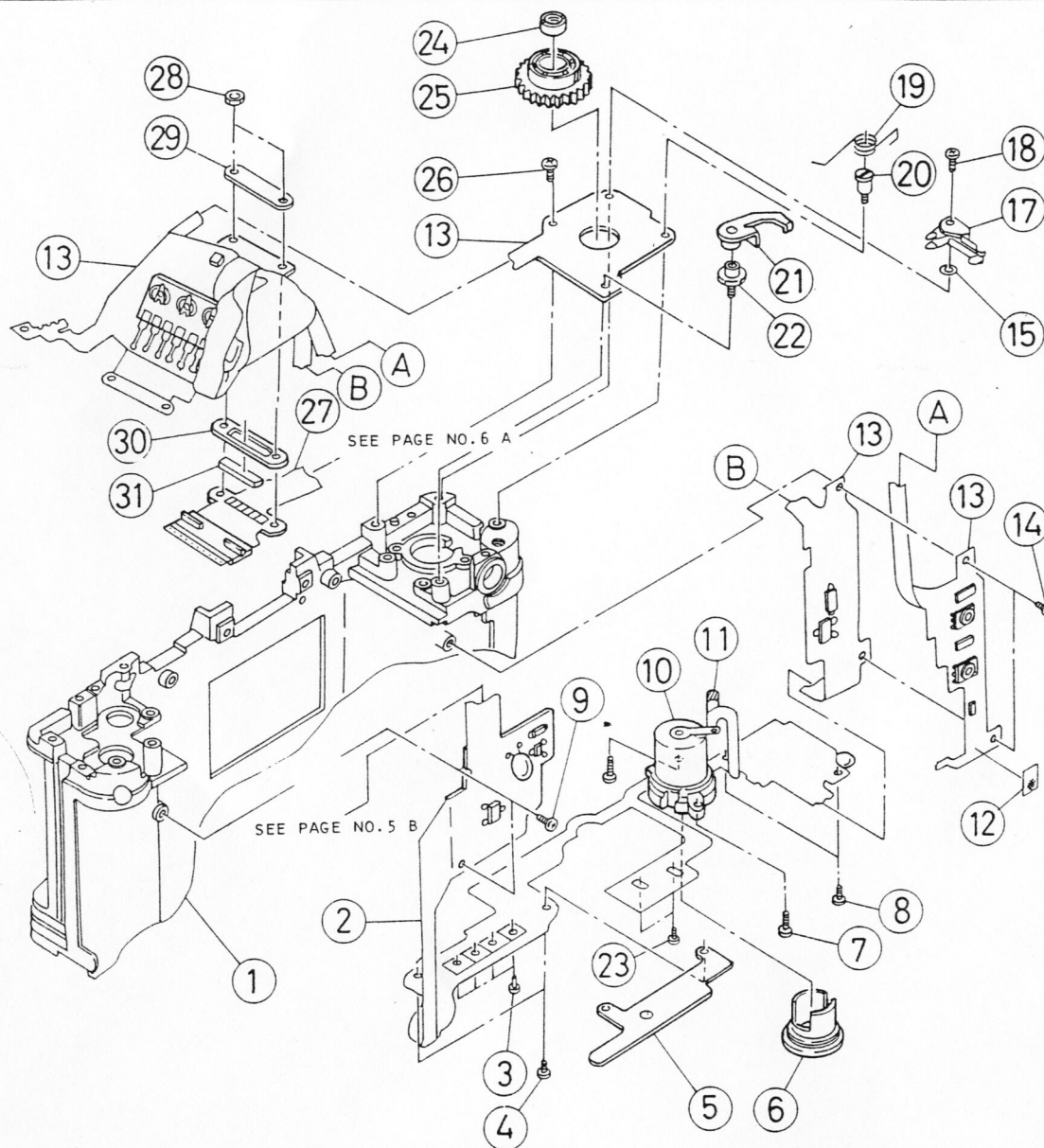
[illegible]

NOTE: PARTS WITH MARKED \* ARE NOT AVAILABLE

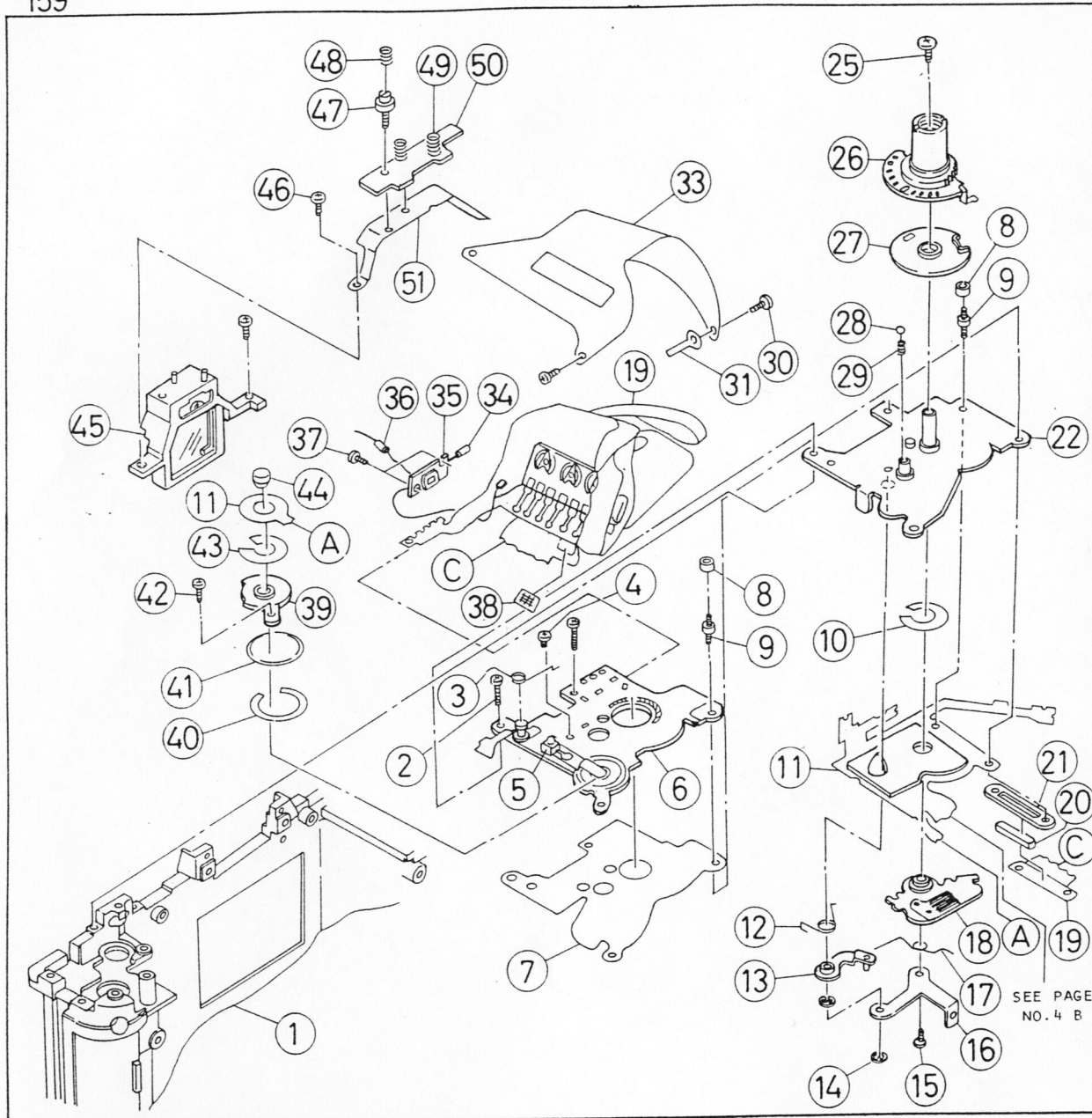






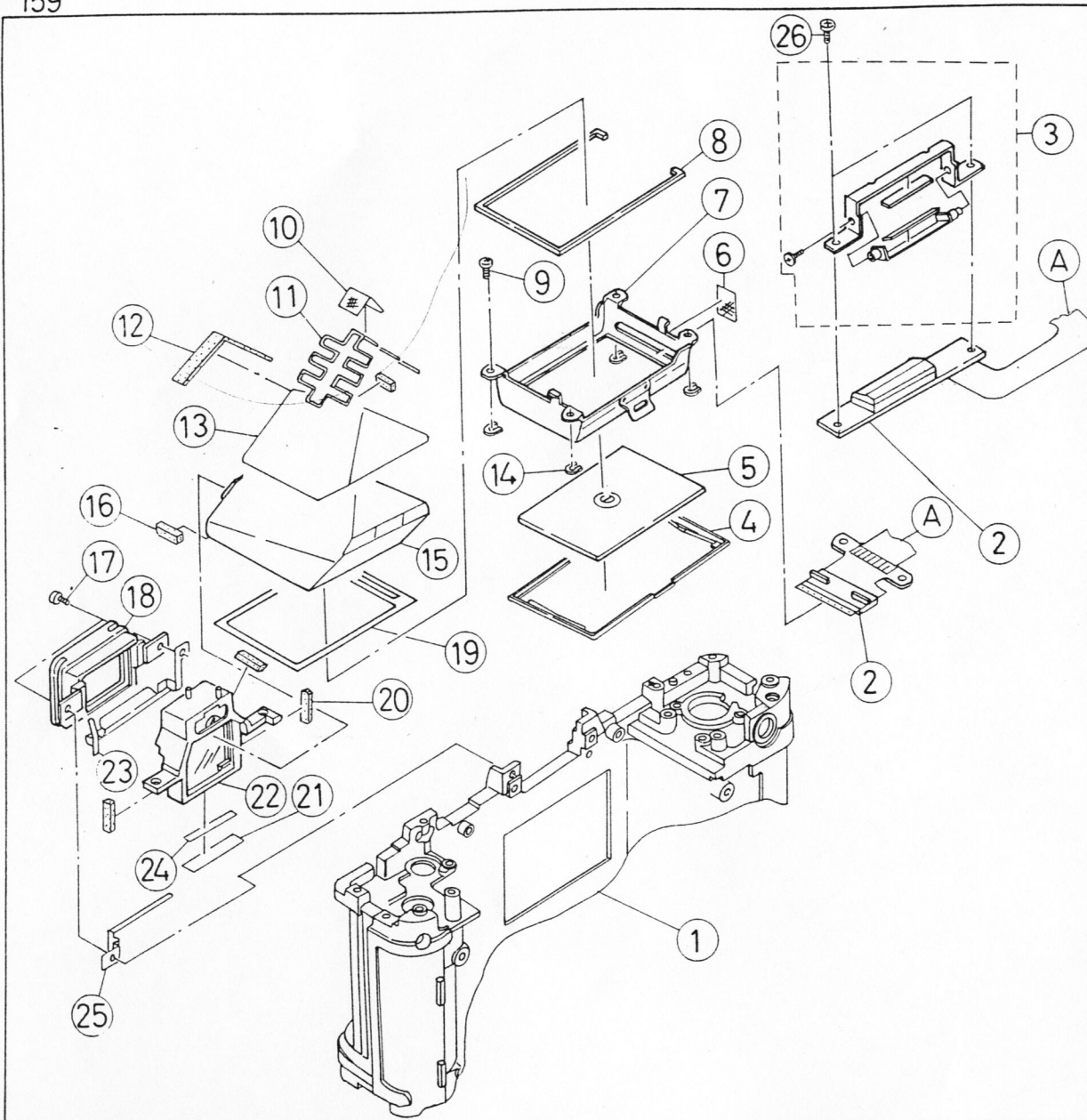
[illegible]

NOTE: PARTS WITH MARKED " ARE NOT AVAILABLE



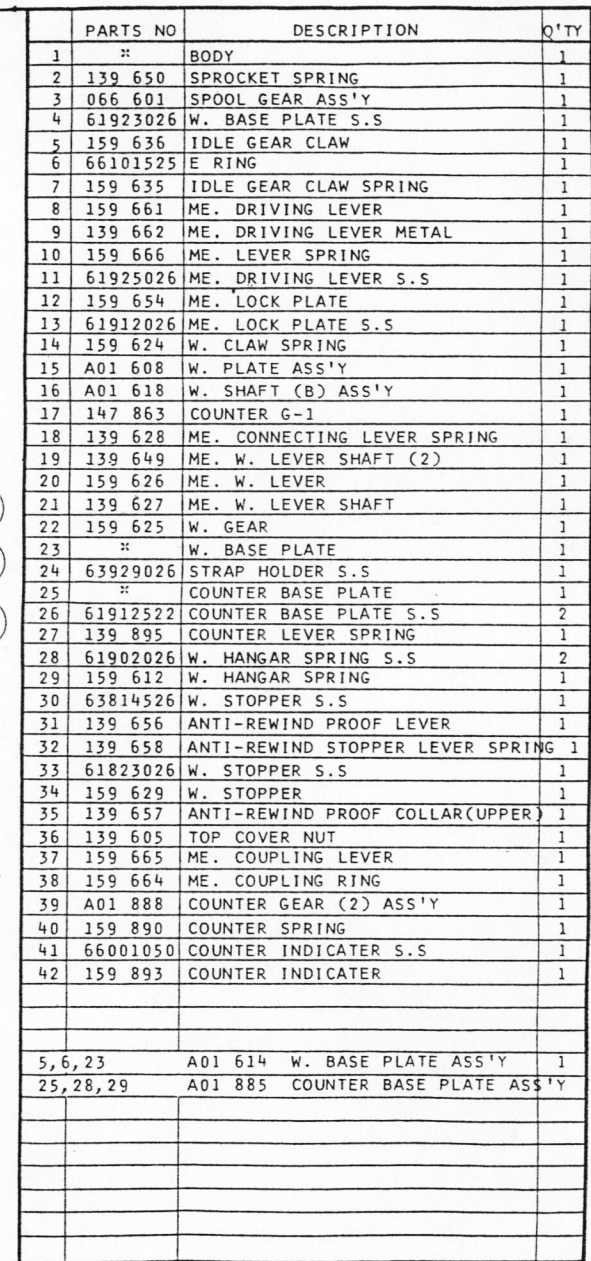
PARTS NO	DESCRIPTION	Q'TY
1	** BODY	1
2	61914522 ISO BASE PLATE S.S	2
3	159 854 FCT SWITCH SPRING	1
4	61902026 ISO BASE S.S	1
5	352 522 B. CHECK LED	1
6	A01 515 ISO RESISTOR BASE ASS'Y	1
7	159 327 ISO INSULATION MYLAR	1
8	159 329 ISO BASE PLATE NUT	2
9	159 328 ISO BASE PLATE S.S	2
10	159 326 AE LOCK TAPE	1
11	A01 506 FPC-2 ASS'Y (SEE PAGE NO.4)	1
12	159 223 M. SW CLICK LEVER SPRING	1
13	A01 220 M. SW CLICK LEVER ASS'Y	1
14	66101525 E RING	2
15	61913026 GRIP HOLDER S.S	1
16	159 212 GRIP HOLDER	1
17	159 217 B. CHECK SPRING	1
18	A01 214 MAIN SWITCH PLATE ASS'Y	1
19	--- AMPLIFIER ASS'Y (SEE PAGE NO.4)	1
20	159 530 ISO ELASTIC CONNECTOR	1
21	159 594 ISO ELASTIC CONNECTOR GUIDE	1
22	** ISO BASE PLATE	1
25	66001065 ISO DIAL SHAFT S.S	1
26	A01 306 ISO DIAL SHAFT ASS'Y	1
27	A01 303 ISO CONTACT BASE ASS'Y	1
28	66701520 STEEL BALL	1
29	159 321 EXP. COMPENSATION CLICK SPRING	1
30	61912022 FPC FIXER SHEET S.S	2
31	107 616 FPC SUPPORT	1
33	159 596 FPC FIXER SHEET	1
34	159 599 TUBE (3) (YELLOW)	1
35	** SPD BASE	1
36	159 597 TUBE (1) (GREEN)	1
37	61912522 SPD BASE S.S	2
38	** ACETATE CLOTH TAPE	1
39	159 315 RELEASE SWITCH BASE	1
40	159 316 RELEASE SWITCH WASHER	1
41	152 520 P.S SWITCH	1
42	63904026 RELEASE SWITCH BASE S.S	1
43	159 326 AE LOCK TAPE	1
44	159 307 RELEASE PIN	1
45	A01 880 EYE PIECE LENS HOLDER ASS'Y	1
46	63903522 EYE PIECE LENS HOLDER S.S	2
47	137 625 MODE SWITCH PLATE SHAFT	1
48	159 847 SPD GUARD SPRING	1
49	139 876 SHOE CONTACT SPRING	2
50	159 534 SYNCHRO BASE	1
4-7, 10-18, 22 A01 301 ISO BASE PLATE ASS'Y (SEE PAGE NO.4)		1
19, 35 A01 505 AMPLIFIER ASS'Y (SEE PAGE NO.4)		1

NOTE: PARTS WITH MARKED \*\* ARE NOT AVAILABLE

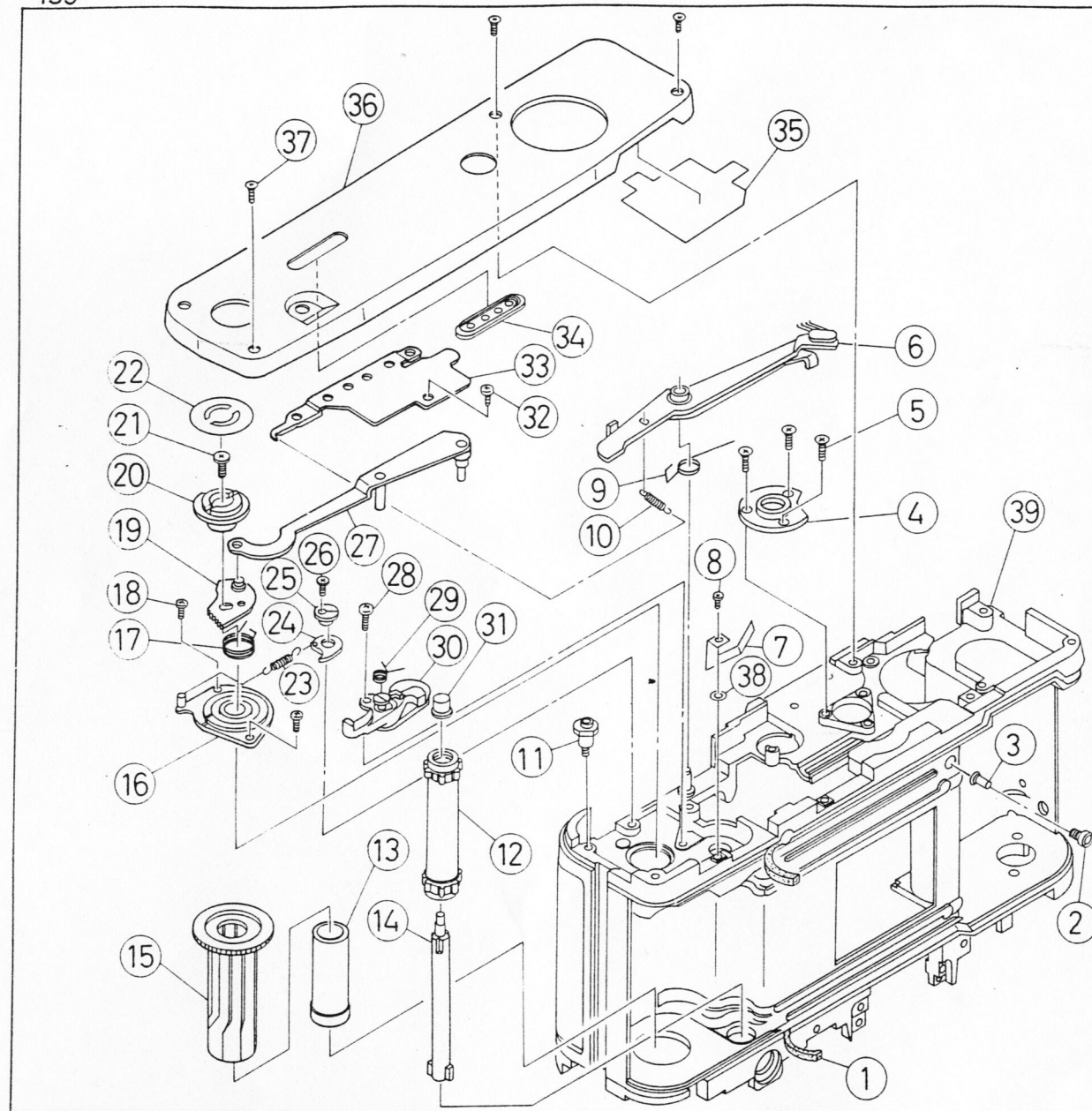
[illegible]

NOTE: PARTS WITH MARKED \* ARE NOT AVAILABLE



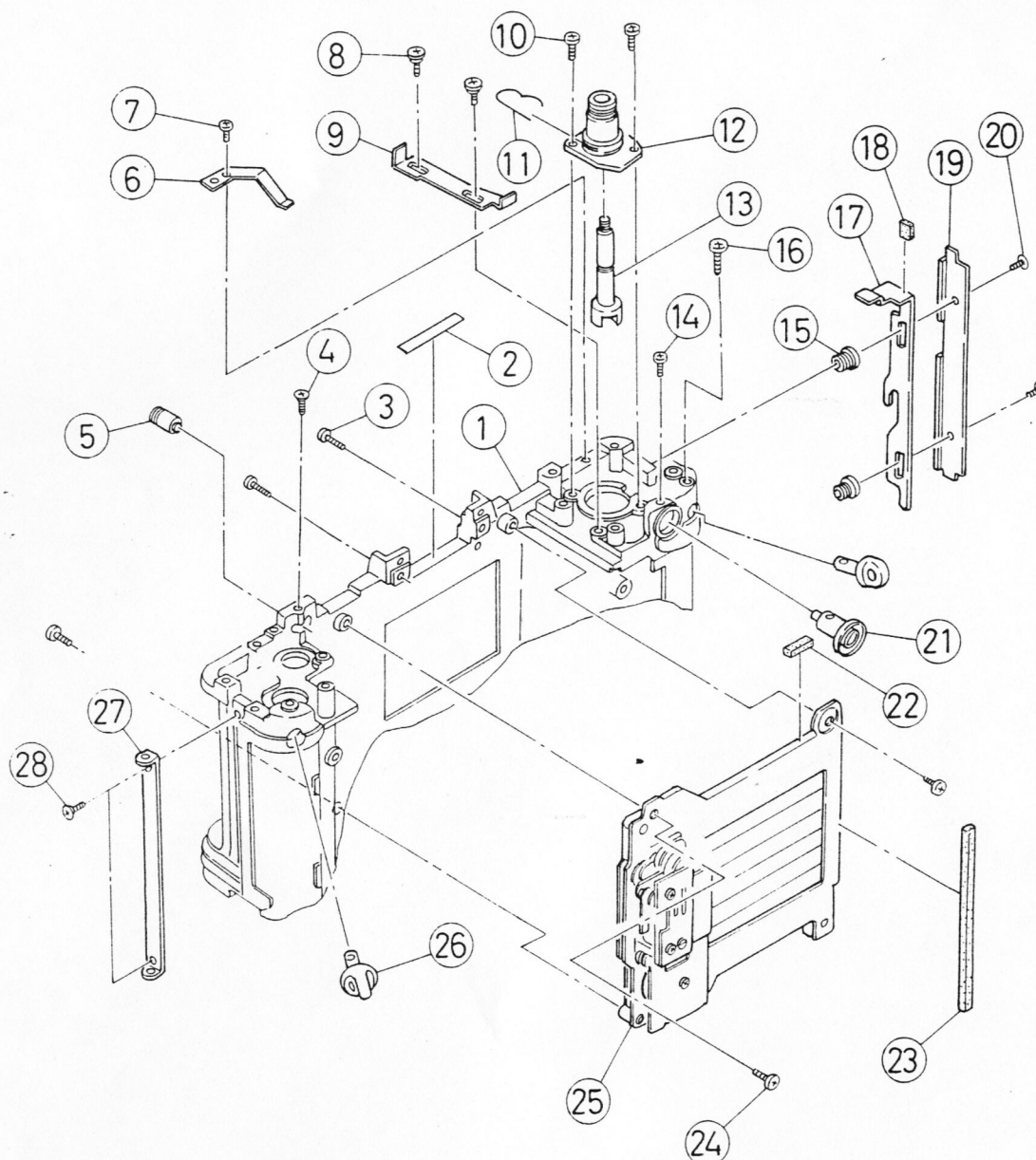


NOTE: PARTS WITH MARKED \* ARE NOT AVAILABLE



	PARTS NO	DESCRIPTION	Q'TY
1	139 106	BODY LIGHT-PROOF MOQUETTE	2
2	139 113	FILM GUIDE PIN	1
3	139 114	D-LED COVER	1
4	159 144	TRIPOD SOCKET	1
5	61824022	TRIPOD SOCKET S.S	3
6	A01 631	W. OBSTRUCTION LEVER ASS'Y	1
7	159 652	SPROCKET REVERSE SPRING	1
8	61912526	SPROCKET REVERSE SPRING S.S	1
9	139 691	W. OBSTRUCTION SPRING (B)	1
10	139 688	W. OBSTRUCTION SPRING (A)	1
11	139 158	WINDER FIXING PIN	1
12	159 370	SPROCKET	1
13	156 622	INSIDE SPOOL	1
14	159 647	SPROCKET SHAFT	1
15	159 641	OUTSIDE SPOOL	1
16	156 611	WINDING SHAFT HOLDER	1
17	152 622	WINDING SPRING	1
18	66001068	WINDING SHAFT HOLDER S.S	2
19	A01 686	SET CAM ASS'Y	1
20	159 679	MD. COUPLING	1
21	66001071	WINDING SHAFT (B) S.S	1
22	139 680	MD. LIGHT-PROOF PLATE	1
23	147 636	ANTI-REWIND PROOF CLAW SPRING	1
24	147 638	ANTI-REWIND PROOF CLAW	1
25	147 637	ANTI-REWIND PROOF CLAW COLLAR	1
26	61813526	ANTI-REWIND PROOF CLAW COLLAR S.S	1
27	A01 682	SM. SET LEVER ASS'Y	1
28	63912526	SPROCKET METAL S.S	1
29	159 677	OR STOP LEVER SPRING	1
30	A01 646	SPROKET METAL ASS'Y	1
31	159 651	SPROKET BUTTON	1
32	61913526	SM SET LEVER FIXER S.S	1
33	159 692	SM SET LEVER FIXER	1
34	159 194	CONNECTOR FRAME	1
35	139 195	BOTTOM COVER INSULATION SHEET	1
36	159 193	BOTTOM COVER	1
37	61812529	BOTTOM COVER S.S	3
38	60121810	SPROCKET REVERSE SPRING WASHER	1
39	"	BODY	1
34-36	A01 193	BOTTOM COVER ASS'Y	1

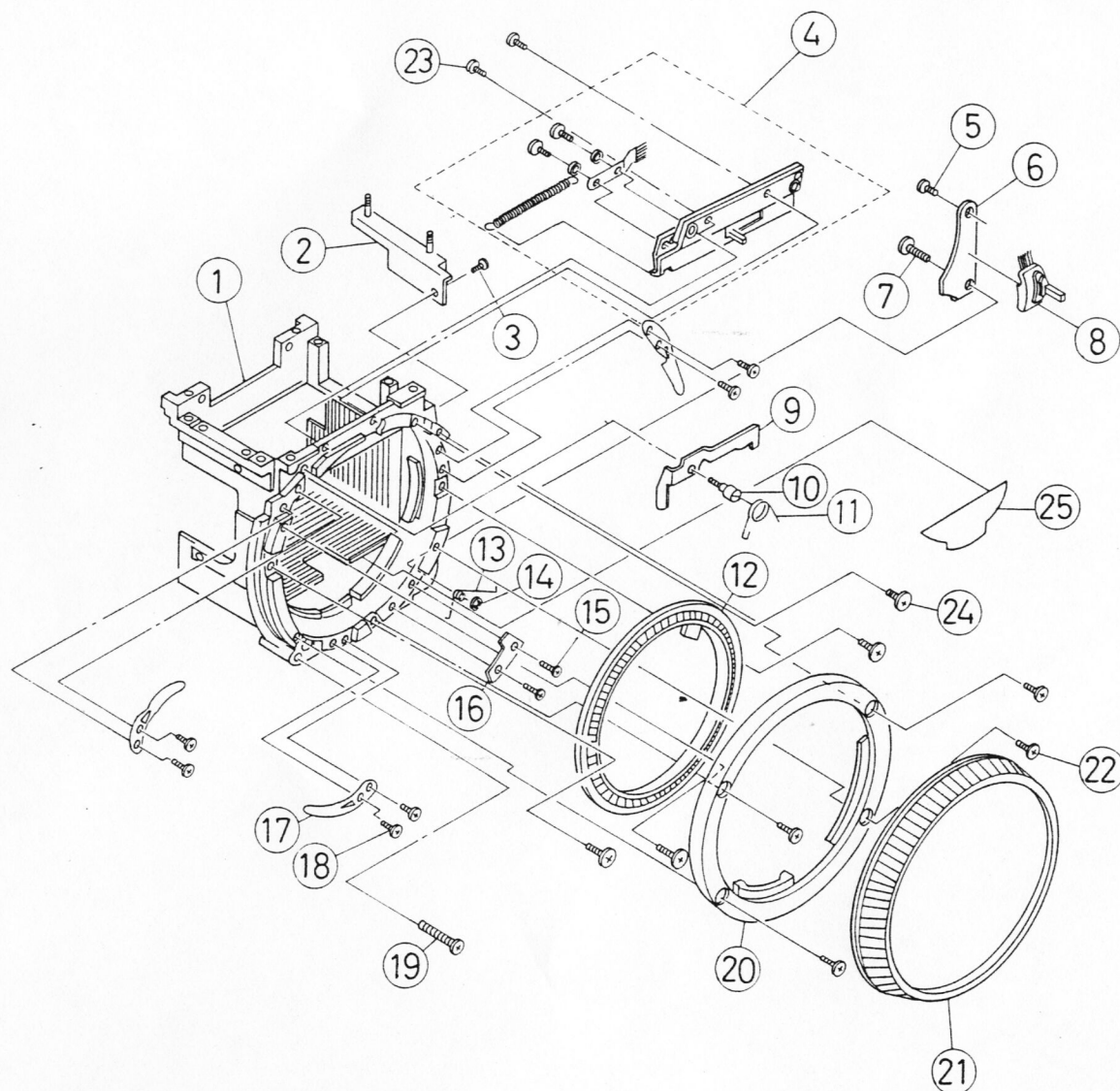
NOTE: PARTS WITH MARKED " ARE NOT AVAILABLE



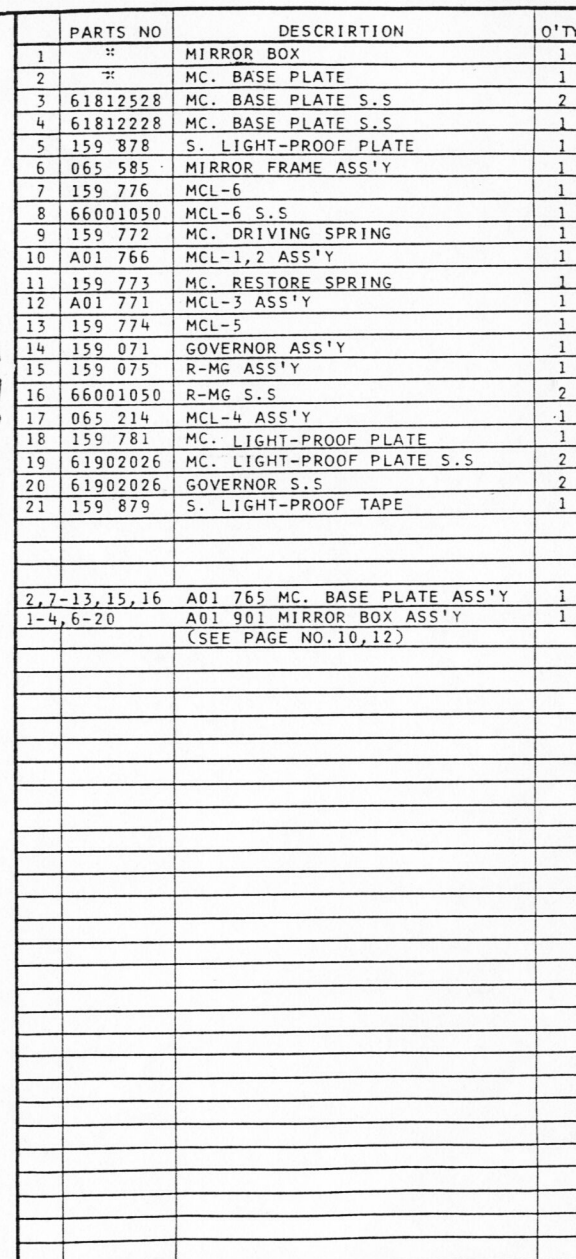
	PARTS NO	DESCRIPTION	Q'TY
1	*	BODY	1
2	159 883	DUST-PROOF TAPE	1
3	61927026	MIRROR BOX S.S	2
4	61812521	R. SOCKET S.S	1
5	065 183	R. SOCKET ASS'Y	1
6	139 121	LOCK PLATE SPRING	1
7	61912522	LOCK PLATE SPRING S.S	1
8	147 437	SR LEVER (3) SHAFT	2
9	159 352	S. LOCK LEVER	1
10	61924026	REWIND SHAFT HOLDER S.S	2
11	139 343	REWIND SHAFT SPRING	1
12	159 341	REWIND SHAFT HOLDER	1
13	159 342	REWIND SHAFT	1
14	61912522	SYNCHRO SOCKET S.S	1
15	131 118	BACK COVER LOCK PLATE SHAFT	2
16	63929026	STRAP HOLDER S.S	1
17	139 120	BACK COVER LOCK PLATE	1
18	159 119	BACK COVER LOCK PLATE MOQUETTE	1
19	159 117	BACK COVER LOCK PLATE COVER	1
20	61812529	BACK COVER LOCK PLATE COVER S.S	2
21	A01 134	SYNCHRO SOCKET ASS'Y	1
22	131 710	MIRROR CUSHION	1
23	139 787	MIRROR CUSHION	1
24	61924022	SHUTTER S.S	3
25	159 201	COMPLETE SHUTTER	1
26	061 633	STRAP HOLDER ASS'Y	2
27	139 148	HINGE SHAFT HOLDER	1
28	61813022	HINGE SHAFT HOLDER S.S	2
11-13	A01 341	REWIND SHAFT HOLDER ASS'Y	1

NOTE: PARTS WITH MARKED \* ARE NOT AVAILABLE

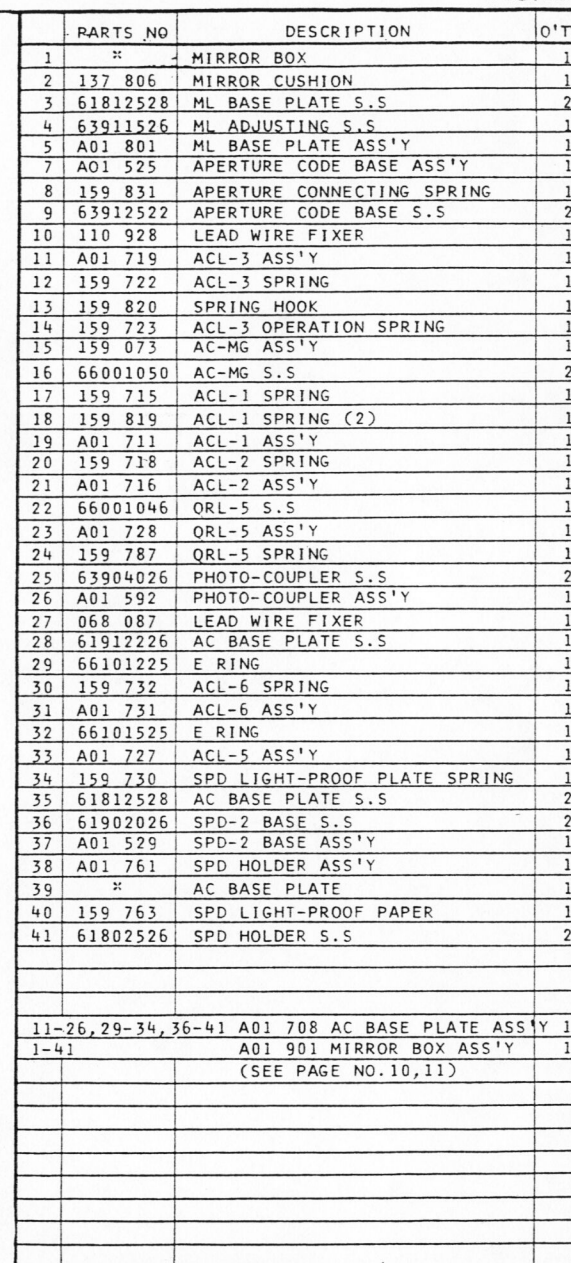


[illegible]

NOTE: PARTS WITH MARKED " ARE NOT AVAILABLE



NOTE: PARTS WITH MARKED \* ARE NOT AVAILABLE



NOTE: PARTS WITH MARKED \* ARE NOT AVAILABLE



*Scan by Equipphoto*

*No commercial use allowed*